



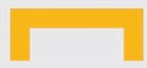
CAKEBOXX TECHNOLOGIES



Product Catalog

Think It, Build It.

Specialized Transportation and Storage Solutions



Supply Chain Systems Engineering

Specialized Transportation and Storage Solutions

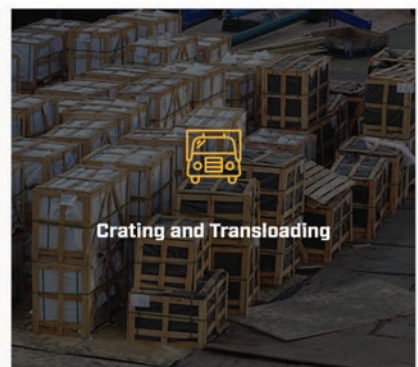
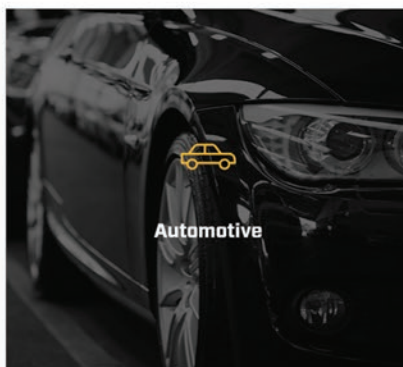
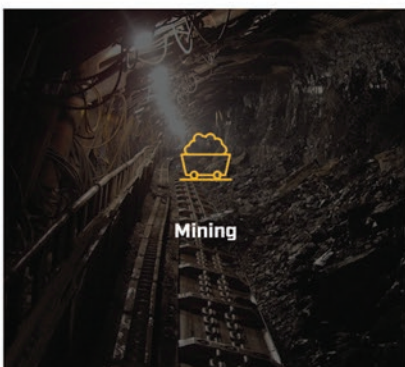
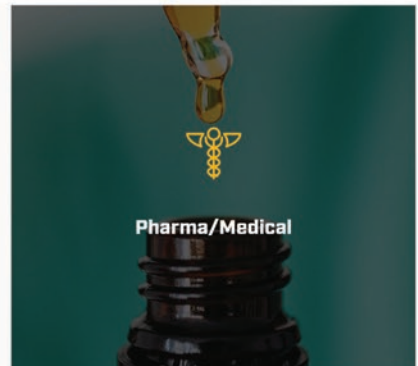
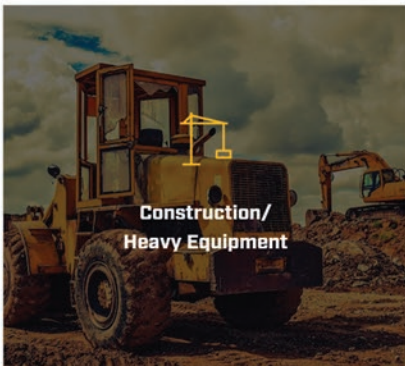
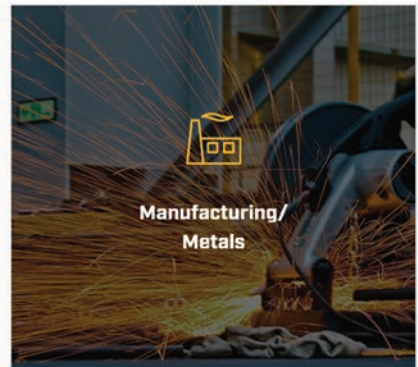
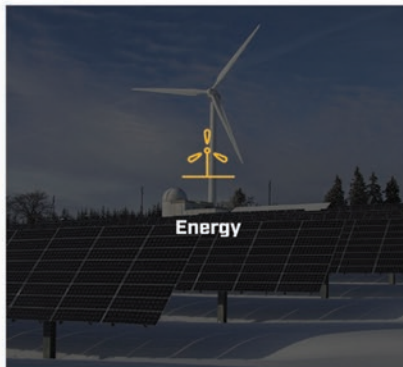
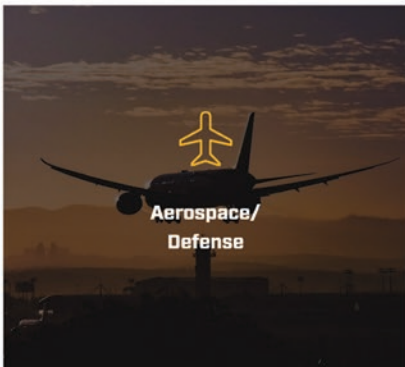
CakeBoxx Technologies is your supply chain systems engineering partner for end-to-end container and transport platform solutions.

Our focus is on minimizing risk, maximizing velocity, and increasing supply chain resilience for our supply chain customers. We specialize in building sustainable cargo transportation and storage solutions to meet specific and unique requirements.

CakeBoxx solutions are suited to transporting and storing **specialized, high-value, high-consequence, high-performance, and mission-critical** cargos - both in-gauge and out-of-gauge, including superloads.

Markets We Serve

Sustainability for Global Industries





CakeBoxx Customers

A Trusted Partner

Leading commercial and governmental organizations in the United States and worldwide trust CakeBoxx to transport and protect their high-value, high-consequence cargo.





Special Application Containers

Think It - Build It

Our engineers work with your specific requirements to design and build completely tailored container solutions to meet specific requirements.

Side-opening container for loading large, sensitive cargos



Three-piece container for overheight, special cargos



Two-piece container with additional height for tall cargos

Dimensions

CakeBoxx can work with you to build a container solution with length, width, and height tailored to your project.

Form Factor

Working with your requirements to engineer specialized containers in whatever form factor suits the task.

Internal and External Fitments

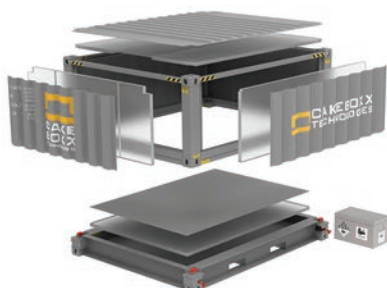
Whatever tie-down systems, locking mechanisms, and other necessary fitments are required, our teams can design and build this to spec.

Refrigeration and Environmental Control

In addition to the ThermoBoxx™ range of two-piece reefer containers, CakeBoxx offers refrigerated and insulated options as a solution in other specially engineered containers where temperature control is necessary. We can also provide other environmental control fittings such as acoustic paneling.



12' wide refrigerated CakeBoxx two-piece container for special temperature sensitive equipment



*Exploded view of CakeBoxx dangerous goods
CakeBoxx two-piece container*



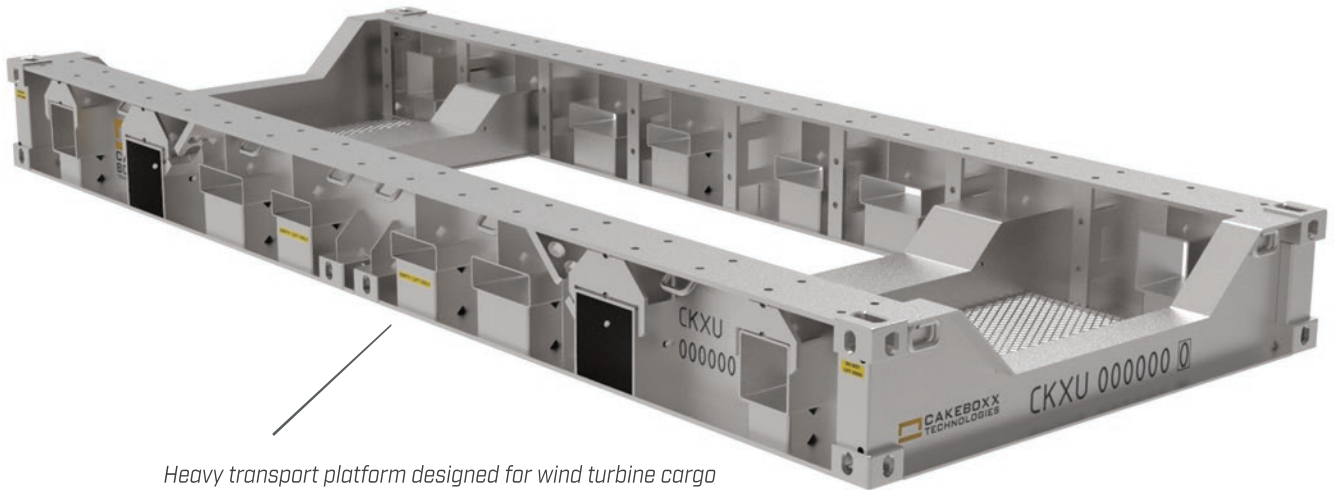
*CakeBoxx ultra-wide and tall two-piece container
with access doors for over dimensional cargo*



Special Platforms

Think It - Build It

Our engineers work with your specific requirements to design and build specialized platform solutions to meet specific requirements.

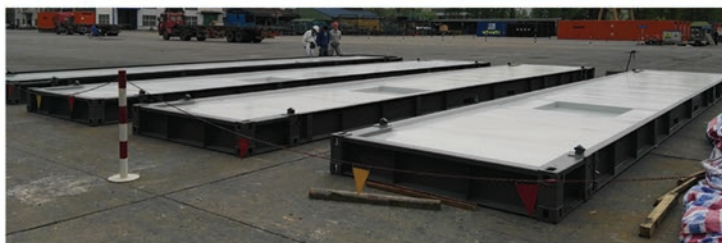


Heavy transport platform designed for wind turbine cargo

Decks and Transport Platforms

The CakeBoxx two-piece container deck can be used independently of the lid much in the same way as a flat rack where required and can be stacked in multiples for easy return transportation. Additionally, CakeBoxx Technologies designs complete tailored transport platforms to suit any requirement. A product line of standard or specially engineered flat racks with folding posts is also available.

CakeBoxx platforms can be used for the transportation and storage for any number of different heavy, awkward-shaped, high-value, high-consequence cargos, and for other special applications.



CakeBoxx sump tray decks



Wind industry transport platforms stacked for return transportation



CakeBoxx® Two-piece Shipping Containers

Put a Lid On It

CakeBoxx Technologies LLC’s inaugural innovation is the two-piece “deck and lid” shipping container; engineered for safety, security, and efficiency.

The key feature of every CakeBoxx® two-piece container is the unique deck and lid construction. Cargo can be loaded and unloaded to and from the deck via the top and all sides, which is a much simpler, safer and quicker task than through the rear doors of standard containers.

The deck and lid design seals and secures the container contents entirely, making unauthorized access and theft virtually impossible.



Deck

Vertical Locking System™

Simple, Quick and Efficient

The **Vertical Locking System™** is a feature built into every CakeBoxx two-piece product. This easy-to-use twist lock system appears above all four corner castings of every model. It secures and releases the lid to and from the deck by simply rotating 90-degrees.



Open / Unlocked



Closed / Locked

CakeBoxx models over 40ft in length also include an End Locking System. This comprises four sliding locking rods, two located on each end at the outboard corners, and heavy-duty capture lugs mounted to the deck in corresponding locations - these easily slide into position to lock and unlock.



Open / Unlocked



Closed / Locked



The CakeBoxx Deck

High Strength Base for Heavy Cargo



The deck portion of a CakeBoxx two-piece container is the flat platform the lid secures to. CakeBoxx decks offer the strength and loading ease of flat racks and open top design, combined with the security and protection of a completely enclosed container. The TrusDek® Series is the latest CakeBoxx deck technology and comes as standard on all CakeBoxx container types, sizes and configurations.

The deck design locks to the lid, keeping cargo safe and secure during transport and storage. It conveniently loads from 360-degrees and is handled by all standard container handling equipment and a wide variety of commercial lifting equipment.

The thickness also allows it to work as a movable pallet after removing the lid. It can be used as an equipment foundation or for other useful applications while still supporting the fully rated payload of the container.

Flat, Open Deck

Allows for maximum usable footprint and is ideal for side loading with equipment such as forklifts.



Recessed Deck

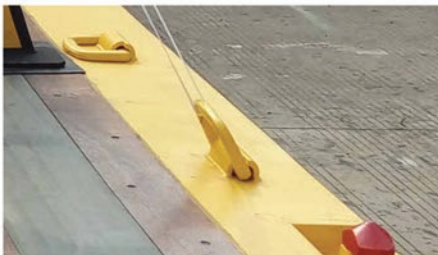
Allows more vertical space for cargo and provides a secure fit, which can benefit rolling stock or heavy equipment.



Versatile Perimeter Tie Down System (PTS™)

Simple, Quick and Efficient

Customer-defined lashing points with up to 30 flush-mounted, heavy-duty D-Rings provide a wide array of cargo lashing options, including countersunk, threaded attachment points for a variety of anchor fittings or through-bolts, allowing opportunities to secure cargos in ways that ordinary, doored containers cannot.





CakeBoxx Options

Applied Engineering

A wide range of options are available on all of our container and platform solutions, to suit your specific requirements.

Doors and Viewing Ports

Containers are available with or without access and cargo doors or removable panels as required and can be designed to customer specifications where necessary.



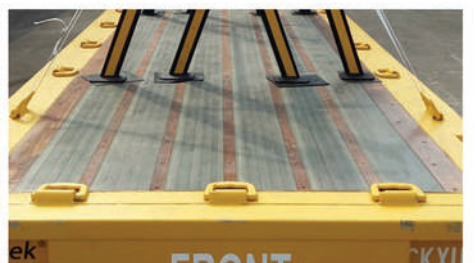
Lifting Tubes and Rings

For special cargo handling requirements, lifting tubes or rings can be added.



Flooring

A variety of customer-specified flooring materials to precisely fit specific requirements for decks and platforms are available. These include steel, FSC certified bamboo or OSB plywood, hardwood, or fiber reinforced plastic (FRP).



Corner Guides

Corner guides are available to aid the securing of the container and to prevent cargo damage during loading and unloading operations.

Insulation Packages

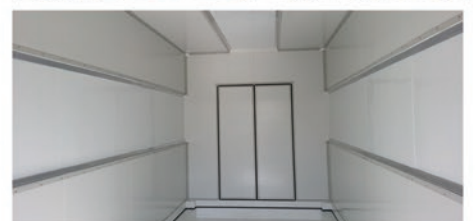
A variety of high-performance insulation options are available.

LED Lighting

Where light in the CakeBoxx lid is a concern, internal LED lighting can be fitted.

Environmentally Friendly Paint

Paint options are available on request. This includes environmentally friendly water-based paints.





Safety Act Designation

Anti-Terrorism Technology



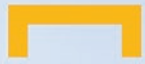
In 2018 the Office of SAFETY Act Implementation at the U.S. Department of Homeland Security congratulated CakeBoxx Technologies on receiving SAFETY Act liability and risk management protections for their innovative, high-security, 'deck and lid' design containers.

CakeBoxx doorless two-piece container models are a Qualified Anti-Terrorism Technology (QATT) and are listed on the SAFETY Act's Approved Equipment List. The SAFETY Act 'Designated' mark can be used by CakeBoxx products as a seal of confidence from U.S. Government security experts that they are effective against terrorism.



We launched the CakeBoxx products to provide a secure option to confront the pervasive and growing container security threat. Our doorless design is an extremely effective deterrent to the most common risk scenarios. At the same time, we wanted to keep the design simple to facilitate ease of inspection and use. We made it strong to ensure longevity and reliability. This combination of attributes results in a very safe, highly secure, and money-saving product with a strong return on investment for a very broad spectrum of users. There are more versions of the CakeBoxx design coming to serve more products and requirements.

Daine Eisold
Founder and CEO
CakeBoxx Technologies



Solutions for

ENERGY



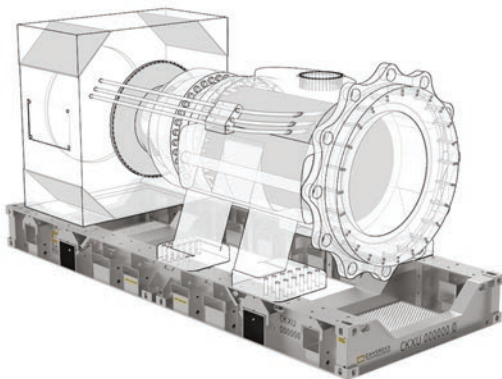
CakeBoxx Technologies is committed to driving the development of advanced transportation systems across the wind, renewables, hydrogen power, and nuclear energy sectors.

We design and build advanced transportation and storage systems for these critical infrastructure supply chains. Our heavy transport platforms are the industry standard for moving onshore and offshore wind turbine components. In addition, specialized two-piece CakeBoxx containers are highly effective in safely transporting nuclear materials for modern nuclear power plants.

CakeBoxx solutions allow the energy industries to move faster, safer, more sustainably, and with reduced risk of cargo damage.



CakeBoxx 40ft special application Flat Rack for wind components, including customer-defined fitments for different cargos



CakeBoxx 20ft heavy transport platform for wind turbine cargos, capable of carrying 100 tons



CakeBoxx two-piece 20ft Industrial Package (IP) Type 1 rated container for safe storage and transportation of nuclear waste



Solutions for **STEEL**

CakeBoxx Technologies has confronted the problem of reimagining shipping containers for the global metal shipping industries.

By simple adaptation, our CoilBoxx™ container transformed a handling-intensive coil shipping process by integrating the steel coils with the deck of the CakeBoxx two-piece container design, allowing simple containerization of steel coils.

CakeBoxx two-piece containers in their various configurations are highly effective for transporting all kinds of metal cargos due to the easy 360° access to the deck portion. This allows heavy or awkwardly shaped metals to be quickly loaded and unloaded while efficiently using the entire container volume. In addition, our BreakBulkBoxx™ product line of 45ft and 53ft containers is particularly suited to long metal cargos, and ShortBoxx™ half-height models to high-density, low-volume cargos.

CakeBoxx containers and platforms provide a time and cost-saving containerized shipping alternative to traditional break bulk vessel and flatbed transport for steel and other metal cargos.



20ft CoilBoxx™ two-piece container



CakeBoxx two-piece 20ft CoilBoxx™ Platform 2 with tarp



CakeBoxx 40ft two-piece container loaded with pipe, secured with the Perimeter Tie Down System (PTS™)



ShortBoxx™ 20ft two-piece container loaded with ingots, secured with the Perimeter Tie Down System (PTS™)

Solutions for

AEROSPACE & DEFENSE

Transport solutions for the mission-critical, high-value and high-consequence cargos of the aerospace, aviation and defense sectors.

CakeBoxx Technologies works extensively with organizations across the aerospace and defense industries, providing transport solutions to best suit the sensitive, and often mission-critical cargos shipped in these sectors.

Aerospace engineering often requires heavy, complex-shaped, and high-cost parts which can be fragile or easily incur damage. CakeBoxx shipping containers for aviation and defense can be designed and built in dimensions and form factor to provide maximum loading and unloading efficiency, both shipment and people safety, as well as the highest cargo security. Candidate defense and aerospace cargos shipped with CakeBoxx solutions include airplane parts, communications equipment, batteries, weapon systems, electronics, data centers, radar installations and munitions.



Side-opening 20ft special application container concept designed for storage and transport of UAVs



CakeBoxx 20ft two-piece container with end and side access doors, designed for uncrewed vehicle cargos



CakeBoxx 40ft two-piece container concept with special application fitments for UAV cargo

Containerize

BREAK BULK

CakeBoxx two-piece containers allow containerized transport for many cargos that would only otherwise ship as costly break bulk or RORO.

The high costs and risks involved with shipping break bulk cargo are driving manufacturers worldwide to increasingly redesign their products and packaging to take advantage of containerized intermodal transportation. Still, many products cannot be loaded into standard containers due to their size, shape, and weight. The CakeBoxx two-piece design allows shippers to take full advantage of the full container volume through simple top and side loading/unloading operations.

Why swap break bulk for a CakeBoxx container?

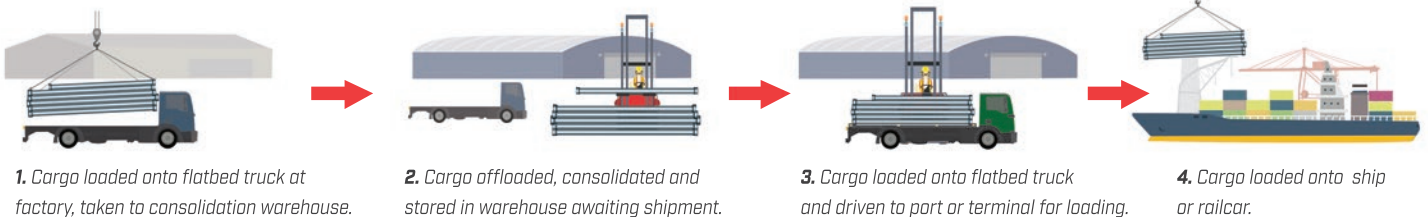
- ✓ **Reduced cost** - Container shipments cost less than break bulk per ton
- ✓ **Increased efficiency** - Top and side loading a container is faster than pierside stevedoring
- ✓ **More transport options, less waiting** - Container ships call more frequently than dry cargo ships
- ✓ **Fewer restrictions** - Eliminates the need to accumulate cargo and dry cargo ship minimums
- ✓ **Safer and more secure** - Containerized goods have fewer handling accidents, damage, and thefts
- ✓ **Range of sizes** - CakeBoxx two-piece containers are available up to 53ft in-gauge as well as options for OOG loads

Candidate cargos

- ✓ Structural steel, pipe, re-bar
- ✓ Baled scrap
- ✓ Wheeled and tracked vehicles
- ✓ Coil, plate, sheet, ingots



CURRENT HANDLING CYCLE:



CAKEBOXX TWO-PIECE CONTAINER HANDLING CYCLE:





CakeBoxx® 20ft / 40ft

Integrating Seamlessly



Dimensionally identical to standard ISO containers, the CakeBoxx 20ft and 40ft containers also have the same load capacities.

The CakeBoxx 20ft and 40ft containers are the perfect choice for optimizing regular supply chain operations safely and efficiently.

The unique CakeBoxx deck and lid design seals and secures the container contents entirely, making unauthorized access and theft virtually impossible.

These containers integrate seamlessly into all intermodal processes, including stacking, storage, terminal transfers, and ship, rail, and truck haulage.

CakeBoxx two-piece containers are also available as standard in 10ft length.





ShortBoxx[®]

Two-piece in half-height



At half the height of a standard high cube container, ShortBoxx containers at 4'9" are ideal for high gross weight, low volume cargos such as steel, copper, or aluminum ingots.

ShortBoxx is also the perfect choice for liquid or granular cargos and chemicals shipped in tanks, drums, barrels or Intermediate Bulk Containers (IBCs) that need to be carefully secured and cannot be stacked two-high. Two ShortBoxx containers can also be safely and efficiently stacked; maximizing product haulage potential but with the same footprint as a standard container. ShortBoxx comes in all standard container lengths and more.



BreakBulkBoxx[™]

Maximize Capacity

The BreakBulkBoxx 45ft and 53ft two-piece containers maximize load potential for standard container operations and are perfect for transporting goods only otherwise movable as break bulk or RORO.

The 53ft WTP configuration is tailored to US intermodal transport handling equipment; making it perfect for moving cargos across road and rail, while the 45ft model fills the long-awaited gap between 40ft and 53ft containers.





CoilBoxx™

The Two-piece Container for Coils

CoilBoxx™ by CakeBoxx Technologies is a specialized container engineered to optimize the transport of coiled and cylindrical cargo. Designed with the proven deck-and-lid configuration, CoilBoxx™ improves handling, enhances safety, and enables easy containerization of high-value steel and aluminum coils.

With adjustable cradles built into the container deck and full 360° cargo access, CoilBoxx™ eliminates the need for blocking, bracing, or repackaging. This cuts time, reduces damage, and unlocks the benefits of secure, cost-effective intermodal logistics.



Key Features

- **Built for Coils:** Adjustable cradle system secures up to three coils of various sizes (ODs 300–1700mm, widths up to 2232mm) directly to the deck - no extra packaging or bracing required.
- **Faster, Safer Handling:** Coils can be loaded once at origin and remain secured through to final destination. 360° access and the CakeBoxx Perimeter Tie Down System (PTS) simplify loading and unloading.
- **Secure & Weather-Protected:** The closed lid design shields cargo from environmental exposure and impact risk throughout transport.
- **Containerized Efficiency:** Offers the cost, scheduling, and routing benefits of intermodal container shipping. This removes reliance on flatbed, flat rack, or breakbulk methods.
- **Versatile Operation:** Lid can be removed for domestic shipments, and cradles can be bundled at one end for backhaul flexibility.
- **Fully Certified:** ISO-compliant and CSC-certified for global transport and intermodal integration.



Specifications

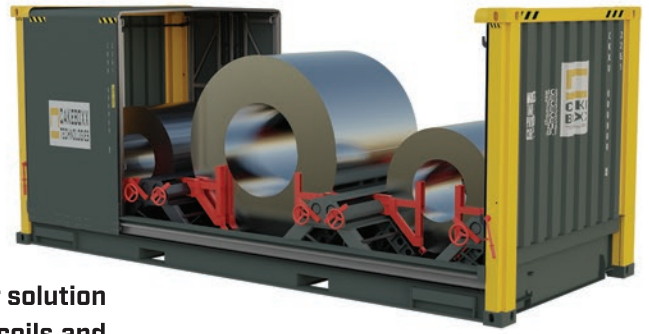
20'x8'x8'6" (CoilBoxx™ 20ft)

CLASSIFICATION		DIMENSION	
EXTERNAL	Length	6058 mm	19' 10.5"
	Width	2438 mm	8'
	Height	2591 mm	8' 6"
INTERNAL	Length	5850 mm	19' 2"
	Width	2232 mm	7' 4"
	Height	2041 mm	6' 8"
Max Gross Weight		35,000 KGS	77,160 LBS
Tare Weight		4,750 KGS	10,470 LBS
Max Payload		30,250 KGS	66,690 LBS
Lid Weight		1,660 KGS	3,659 LBS



FlexBoxx™

Revolutionizing Coil and Equipment Transport



FlexBoxx™ by CakeBoxx Technologies is a groundbreaking container solution offering unparalleled flexibility and efficiency in transporting steel coils and heavy-duty cargo across marine, rail, and road networks.

The Flexible Loading Enhanced Container System (FlexBoxx™) is designed to revolutionize the transport of steel coils and other heavy-duty materials. Available in 20ft and 40ft variants, FlexBoxx™ features a waterproof sliding tarpaulin system and adjustable cradles that accommodate coils ranging from 900mm to 2100mm in diameter and up to 2000mm in width. Its modular design allows for single-person operation, with cargo securely locked by adjustable heavy-duty brackets. The tarpaulin opens from either end and can be operated even when containers are stacked or mounted on rail wagons. With full intermodal compatibility, FlexBoxx™ ensures unmatched flexibility and efficiency in cargo transport.

Key Features

- 20ft and 40ft variants
 - Adjustable cradle system for coils
 - Waterproof sliding tarpaulin system that opens from either end
 - Single-person operation for adjusting cradles, opening tarpaulin, and locking brackets
 - Removable coil racks for versatile cargo configurations
 - Stackable up to five high, with tarpaulin operable when stacked (in safe environments)
 - Fleece-lined tarpaulin for humidity control and weather protection
 - Payload removal possible while stacked or mounted on trailers/chassis
 - No need for lid removal or forklift entry to access cargo
- Designed for intermodal transport across marine, rail, and road networks
- ISO, UIC, and CSC certified



Specifications

20'x8'x8'6" (FlexBoxx™ 20ft)

	CLASSIFICATION	DIMENSION	
EXTERNAL	Length	6058 mm	19'-10½"
	Width	2438 mm	8'
	Height	2591 mm	8'-6"
INTERNAL	Length (Between end walls)	5958 mm	19' 6"
	Length (Between corner posts)	5702 mm	18'-8"
	Width (Between arch tarpaulin frame)	2351 mm	7'-8"
	Width (Between flanges of bottom side rail)	2272 mm	7'-5"
	Width (Between stopper arms)	790~2150 mm	2'-7"
	Height (Steel floor to arch tarpaulin frame lower)	2282 mm	7'-5"
COIL DIA		0900-2100 mm	
Internal Cubic Capacity		32 m³	1,130 ft³
Max Gross Weight		34,000 KGS	74,960 LBS
Tare Weight (Estimated)		4,700 KGS	10,360 LBS
Max Payload		29,300 KGS	64,600 LBS



ThermoBoxx™

Two-piece reefer



Available as standard in 20ft and 40ft lengths or built-to-spec, the ThermoBoxx™ line of two-piece reefer containers provides temperature control with all the benefits of the CakeBoxx two-piece form factor.

ThermoBoxx™ reefer containers are perfect for containerizing difficult-to-load specialized goods or cargos that need a high level of security, with a requirement for refrigeration or temperature control. The CakeBoxx two-piece design, with its easy top and side loading factor, allows shippers to use the container volume fully and not waste space. This product line makes containerization possible for many industries where shipment of temperature-sensitive products or parts on container vessels was not previously viable with standard containers due to loading or security issues.



Why use a two-piece Reefer?

- ✓ **Improved handling** - Easy, quick loading and securing of goods using existing lashing materials
Increased efficiency - Reduced handling time and increased terminal velocity with seamless integration into the logistics chain
- ✓ **Safe & secure** - Safe to operate, total protection from the weather with closed lid, and reduced or eliminated chance of impact damage
- ✓ **Versatile** - Perfect for many industries requiring temperature control, including high tech, electronics, defense, composites, space and aeronautics, pharmaceuticals, and for the shipment of chilled and frozen food and drink. Available with or without industry-standard cargo loading doors



ThermoBoxx™ 24ft x 16ft

Oversized. Temperature Controlled. Mission Ready.



The ThermoBoxx™ 24ft x 16ft by CakeBoxx Technologies is a specialized temperature-controlled container designed to protect sensitive cargo across the world's most demanding environments.

Engineered with our signature two-piece deck-and-lid design, ThermoBoxx™ delivers superior access, handling flexibility, and environmental protection for high-value shipments including defense systems, electronics, pharmaceuticals, and advanced industrial equipment. This 24-foot reefer platform maintains internal temperatures at controlled room conditions in climates ranging from arctic cold to desert heat. Fully certified and intermodal-ready, it provides the security, efficiency, and modularity trusted by global defense and technology customers.

Key Features

- **Climate-Stable Performance:** Maintains required internal temperatures in external environments ranging from -50°C to +70°C. Ideal for sensitive electronics, surveillance systems, high-tech equipment, and pharma-grade cargo.
- **Two-Piece Deck-and-Lid Design:** CakeBoxx's patented configuration ensures 360° cargo access, safer loading, and secure containment.
- **Integrated Thermo King® System:** Equipped with a Thermo King reefer unit and optional Thermo King generator set for autonomous power when needed.
- **High-Grade Insulation:** Standard refrigerated container-grade insulation on all six sides ensures thermal integrity in transit and storage.
- **Rugged Intermodal Compatibility:** Fully CSC-tested and ISO 1496-2 compliant. Corner castings on all 8 corners with standard 20'x8' handling apertures.
- **Secure Mounting & Handling Systems:** Stainless steel floor with tailored mounting points for mission-specific equipment. Twist-lock system and internal corner guides ensure stability and protection during lid operations.



Specifications

24'x16'x9'6"
[ThermoBoxx™ 24ft x 16ft]

CLASSIFICATION		DIMENSION	
EXTERNAL	Length	7315 mm	24'
	Width	4876 mm	16'
	Height	2896 mm	9'6"
INTERNAL	Length	6666 mm	262.44"
	Width	4636 mm	182.52"
	Height	2087 mm	82.17"
Internal Cubic Capacity		64.5 cubic meters	2,280 cubic feet
Max Gross Weight		34,000 kgs	75,840 LBS
Tare Weight (±2%)		11,000 KGS	24,250 LBS
Max Payload		23,400 KGS	51,600 LBS



www.cakeboxx.com | info@cakeboxx.com



ThermoBoxx™ 22ft x 12ft

Oversized. Temperature Controlled. Mission Ready.



The ThermoBoxx™ 22ft by CakeBoxx Technologies is a specialized temperature-controlled container designed to protect sensitive cargo across the world's most demanding environments.

Engineered with our signature two-piece deck-and-lid design, ThermoBoxx™ delivers superior access, handling flexibility, and environmental protection for high-value shipments including defense systems, electronics, pharmaceuticals, and advanced industrial equipment. This 22-foot reefer platform maintains internal temperatures at controlled room conditions in climates ranging from harsh cold to extreme heat. Fully certified and intermodal-ready, it provides the security, efficiency, and modularity trusted by global defense and technology customers.

Key Features

- **Climate-Stable Performance:** Maintains required internal temperatures in external environments ranging from -50°C to +70°C. Ideal for sensitive electronics, surveillance systems, high-tech equipment, and pharma-grade cargo.
- **Two-Piece Deck-and-Lid Design:** CakeBoxx's patented configuration ensures 360° cargo access, safer loading, and secure containment.
- **Integrated Thermo King® System:** Equipped with a Thermo King reefer unit and optional Thermo King generator set for autonomous power when needed.
- **High-Grade Insulation:** Standard refrigerated container-grade insulation on all six sides ensures thermal integrity in transit and storage.
- **Rugged Intermodal Compatibility:** Fully CSC-tested and ISO 1496-2 compliant. Corner castings on all 8 corners with standard 20'x8' handling apertures.
- **Secure Mounting & Handling Systems:** Stainless steel floor with tailored mounting points for mission-specific equipment. Twist-lock system and internal corner guides ensure stability and protection during lid operations.



Specifications

22'x12'x9'6"
[ThermoBoxx™ 22ft x 12ft]

CLASSIFICATION		DIMENSION	
EXTERNAL	Length	6706 mm	22'
	Width	3658 mm	12'
	Height	2896 mm	9'6"
INTERNAL	Length	5944 mm	19'10"
	Width	3404 mm	11'2"
	Height	2215 mm	7'4-51/64"
Internal Cubic Capacity		m ³	ft ³
Max Gross Weight		30480 KGS	67200 LBS
Tare Weight (Estimated)		10660 KGS	23500 LBS
Max Payload		19820 KGS	43700 LBS



Heavy Duty Transport Platform (250t)

Modular Frame for Heavy Industrial Loads up to 250t

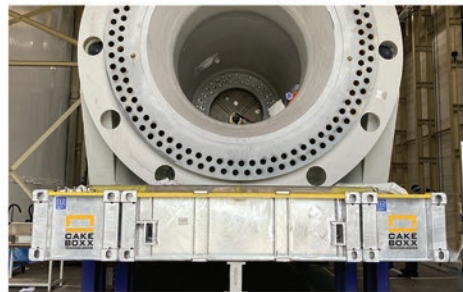
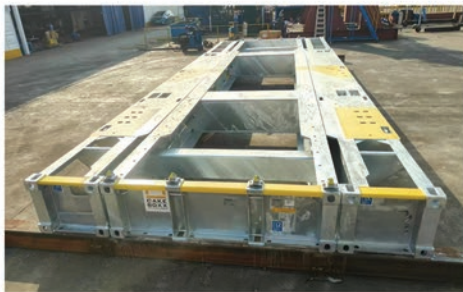


The Heavy Duty Transport Platform (250t) is a rugged, modular transport solution built for the movement of extremely heavy and oversized industrial cargo. Originally developed for wind turbine gearboxes, this three-piece platform system offers outstanding versatility across the energy, industrial, and heavy equipment sectors.

With a galvanized finish, intermodal compatibility and an expandable footprint, it is ideal for offshore, energy, and heavy industry applications where strength, safety, and adaptability are critical.

Key Features

- **Engineered for Oversized Loads:** Three-piece platform expands from standard 40ft container width to a 13'9" wide operational footprint, supporting payloads up to 250 metric tons. This is ideal for large wind components and other industrial cargo.
- **Container-Compatible Transport Mode:** In transport mode, the platform wings stack to maintain standard container dimensions for easy integration with marine, rail, and road logistics. Two full sets can be stacked to match a 40ft high-cube profile.
- **Safe, Efficient Handling:** Standard corner castings and forklift pockets on both main and wing sections enable fast, flexible movement using standard container handling equipment.
- **Rugged, Offshore-Ready Design:** Galvanized finish resists corrosion in harsh weather and offshore environments. Perimeter tie-downs ensure secure restraint of high-consequence cargo.
- **Modular & Scalable:** Simple interlocking mechanism allows fast assembly and disassembly by a single operator. Expand only when needed, reducing footprint and complexity.
- **Certified & Intermodal-Ready:** Main platform and complete system are CSC-certified and designed for full intermodal compatibility, supporting reliable, repeatable deployment worldwide.



Specifications

40' x 13'9" x 2'3"
[Operational Configuration]

COMPONENT	LENGTH (MM/FT/IN)	WIDTH (MM/FT/IN)	HEIGHT (MM/FT/IN)	TARE WEIGHT (KG/LBS)	GROSS WEIGHT (KG/LBS)	PAYLOAD (KG/LBS)	D-RING LOAD (KG)
MAIN PLATFORM	12,192 (0, -10) / 40'	2,438 (0, -5) / 8'	700 (0, -3) / 2'1"	7,200 / 15,870 ±2%	R1: 7,200 / 15,870 (sea lift) R1': 80,000 / 176,370 (trailer lift) R1'': 34,000 / 74,960 (jacking)	P1: 0 / 0 P1': 72,800 / 160,490 P1'': 26,800 / 59,080	10,000
WING PLATFORM	12,192 (0, -10) / 480"	881 (0, -5) / 1,196 (0, -5) / 34.68"	700 (0, -3) / 2'1"	5,250 / 11,570 ±2%	R2: 5,250 / 11,570 (top corner castings)	P2: 0 / 0	
HEAVY TRANSPORT MODULE	12,192 (0, -10) / 480"	4,200 (0, -5) / 165.35"	700 (0, -3) / 2'1"	17,700 / 39,020 ±2%	R3: 17,700 / 39,020 R3': 267,700 / 590,170 (wing hooks)	P3: 0 / 0 P3': 250,000 / 551,150	
EMPTY TRANSPORT MODULE	12,192 (0, -10) / 480"	2,438 (0, -5) / 8'	1,428 (0, -3) / 56.22"	17,700 / 39,020 ±2%	R4: 17,700 / 39,020 (ISO top corner castings)	P4: 0 / 0	



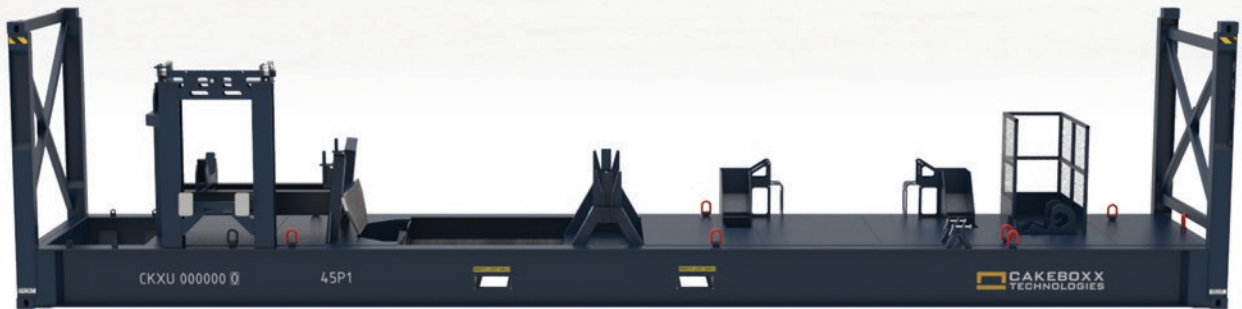
CakeBoxx Flat Rack

Flexible Freight Transportation

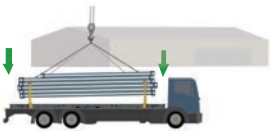


Available in all standard lengths up to 53ft and to-spec with any tailored fitments, CakeBoxx Flat Racks are a flat-deck solution offering a great deal of flexibility for intermodal transportation and the ability to carry extremely heavy payloads.

Collapsible CakeBoxx flat racks can be stacked to accommodate a smaller footprint when repositioning. In addition, the CakeBoxx Flat Rack 53ft is tailored to US intermodal transport handling equipment, making it perfect for moving cargo across road and rail.



CAKEBOXX FLAT RACK HANDLING CYCLE:



1. CakeBoxx Flat Rack secured onto chassis and taken to shipper's yard. Cargo loaded onto the Flat Rack.



2. After road transportation to rail terminal, the loaded Flat Rack transferred onto railcar.



3. The CakeBoxx Flat Rack is transported via rail, where it can be double stacked for cost efficiency.



4. Cargo is transferred from rail to chassis for delivery to customer.





ChassisBoxx

The Flatbed CakeBoxx



The CakeBoxx ChassisBoxx transforms a container chassis to a fully enclosed flatbed trailer for over the road use.

The deck is installed simply by fitting it to the existing twistlocks on any standard container chassis. Cargo is top or side loaded and secured before installing the ChassisBoxx lid. Cargo is protected from the elements, theft, vandalism, and general damage caused by uncovered transport – precisely in the same way a fully enclosed shipping container or truck trailer would.

ChassisBoxx adds value and productivity to existing and under-utilized container chassis and add flexibility to your ground transport needs.



Standard Containers

Maximize Capacity



In addition to the specialized, systems-engineered solutions CakeBoxx Technologies provides to our customers, we also offer competitive rates on standard ISO containers of all sizes, in addition to other out-of-gauge and customized container options.

This includes side-opening containers, open-top containers, flat racks, and many more. Contact CakeBoxx Technologies directly with your requirements for a quotation.

Contact

CakeBoxx



USA/Global

CakeBoxx Technologies, LLC
1499 Chain Bridge Road, Suite 104
McLean, VA
22101
USA



+1 (571) 830-6559



info@cakeboxx.com
www.cakeboxx.com

