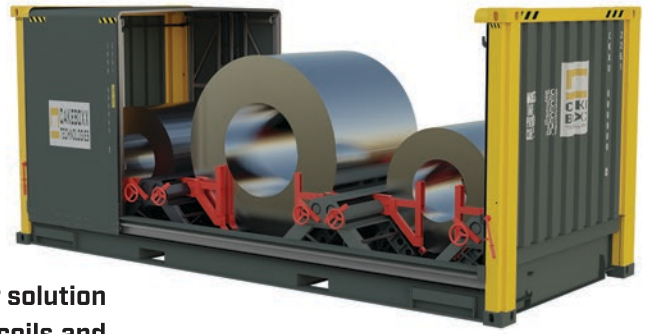




FlexBoxx™

Revolutionizing Coil and Equipment Transport



FlexBoxx™ by CakeBoxx Technologies is a groundbreaking container solution offering unparalleled flexibility and efficiency in transporting steel coils and heavy-duty cargo across marine, rail, and road networks.

The Flexible Loading Enhanced Container System (FlexBoxx™) is designed to revolutionize the transport of steel coils and other heavy-duty materials. Available in 20ft and 40ft variants, FlexBoxx™ features a waterproof sliding tarpaulin system and adjustable cradles that accommodate coils ranging from 900mm to 2100mm in diameter and up to 2000mm in width. Its modular design allows for single-person operation, with cargo securely locked by adjustable heavy-duty brackets. The tarpaulin opens from either end and can be operated even when containers are stacked or mounted on rail wagons. With full intermodal compatibility, FlexBoxx™ ensures unmatched flexibility and efficiency in cargo transport.

Key Features

- 20ft and 40ft variants
 - Adjustable cradle system for coils
 - Waterproof sliding tarpaulin system that opens from either end
 - Single-person operation for adjusting cradles, opening tarpaulin, and locking brackets
 - Removable coil racks for versatile cargo configurations
 - Stackable up to five high, with tarpaulin operable when stacked (in safe environments)
 - Fleece-lined tarpaulin for humidity control and weather protection
 - Payload removal possible while stacked or mounted on trailers/chassis
 - No need for lid removal or forklift entry to access cargo
- Designed for intermodal transport across marine, rail, and road networks
- ISO, UIC, and CSC certified



Specifications

20'x8'x8'6" (FlexBoxx™ 20ft)

	CLASSIFICATION	DIMENSION	
EXTERNAL	Length	6058 mm	19'-10½"
	Width	2438 mm	8'
	Height	2591 mm	8'-6"
INTERNAL	Length (Between end walls)	5958 mm	19' 6"
	Length (Between corner posts)	5702 mm	18'-8"
	Width (Between arch tarpaulin frame)	2351 mm	7'-8"
	Width (Between flanges of bottom side rail)	2272 mm	7'-5"
	Width (Between stopper arms)	790~2150 mm	2'-7"
	Height (Steel floor to arch tarpaulin frame lower)	2282 mm	7'-5"
COIL DIA		0900-2100 mm	
Internal Cubic Capacity		32 m³	1,130 ft³
Max Gross Weight		34,000 KGS	74,960 LBS
Tare Weight (Estimated)		4,700 KGS	10,360 LBS
Max Payload		29,300 KGS	64,600 LBS