



# CAKEBOXX TECHNOLOGIES



## Supply Chain **Systems Engineering**

Specialized Transportation and Storage Solutions



# Supply Chain Systems Engineering

## Specialized Transportation and Storage Solutions

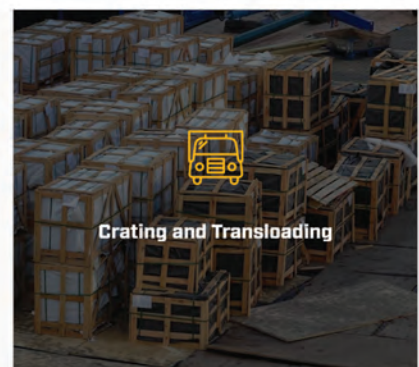
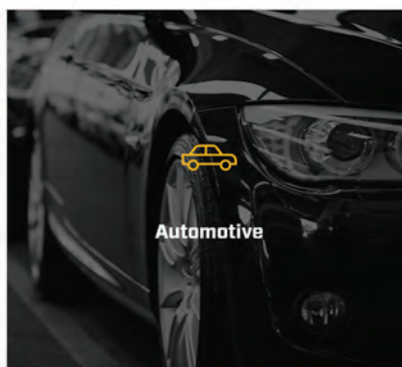
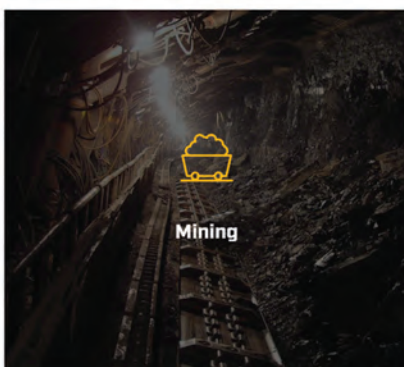
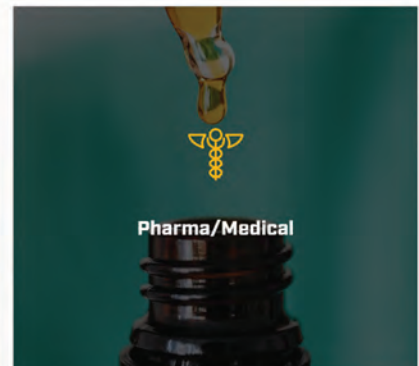
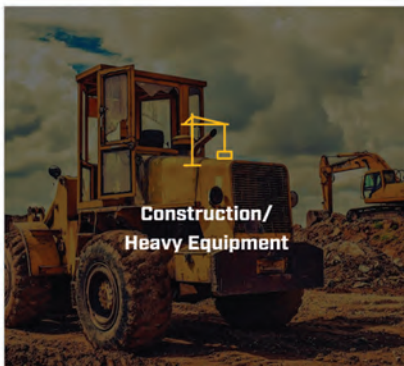
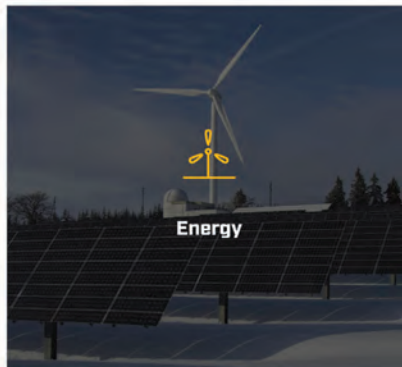
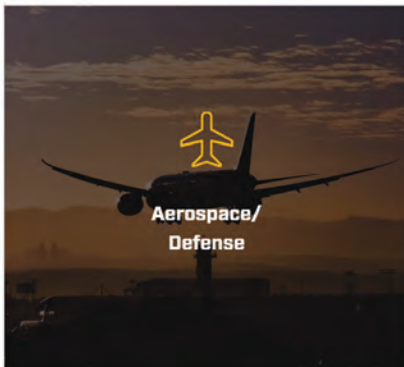
**CakeBoxx Technologies is your supply chain systems engineering partner for end-to-end container and transport platform solutions.**

Our focus is on minimizing risk, maximizing velocity, and increasing supply chain resilience for our supply chain customers. We specialize in building sustainable cargo transportation and storage solutions to meet specific and unique requirements.

*CakeBoxx solutions are suited to transporting and storing **specialized, high-value, high-consequence, high-performance, and mission-critical** cargos - both in-gauge and out-of-gauge, including superloads.*

### Markets We Serve

Sustainability for Global Industries



# CakeBoxx Customers



GENERAL DYNAMICS



Vestas



BATTELLE



Viasat



NetworkRail

SNF FLOQUIP



DANHYDRA  
TOOL SOLUTIONS FOR WIND POWER

ENERPAC





# Special Application Containers

## Think It - Build It

Our engineers work with your specific requirements to design and build complete custom engineered container solutions to meet specific requirements.

*Side-opening container for loading large, sensitive cargos*



*Three-piece container for overheight, special cargos*



*Two-piece container with additional height for tall cargos*

### **Dimensions**

CakeBoxx can work with you to build an entirely custom container solution with length, width, and height tailored to your project.

### **Form Factor**

Working with your requirements to engineer specialized custom containers in whatever form factor suits the task.

### **Internal and External Fitments**

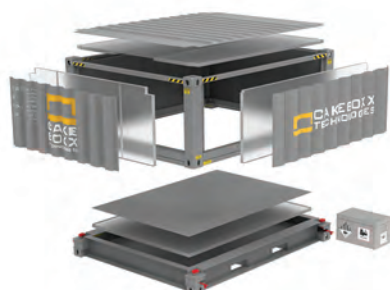
Whatever tie-down systems, locking mechanisms, and other necessary fitments are required, our teams can design and build this to spec.

### **Refrigeration and Environmental Control**

In addition to the ThermoBoxx™ range of two-piece reefer containers, CakeBoxx offers refrigerated and insulated options as a custom solution in other specially engineered containers where temperature control is necessary. We can also provide other environmental control fittings such as acoustic paneling.



*12' wide refrigerated CakeBoxx two-piece container for special temperature sensitive equipment*



*Exploded view of CakeBoxx dangerous goods  
CakeBoxx two-piece container*



*CakeBoxx ultra-wide and tall two-piece container  
with access doors for over dimensional cargo*

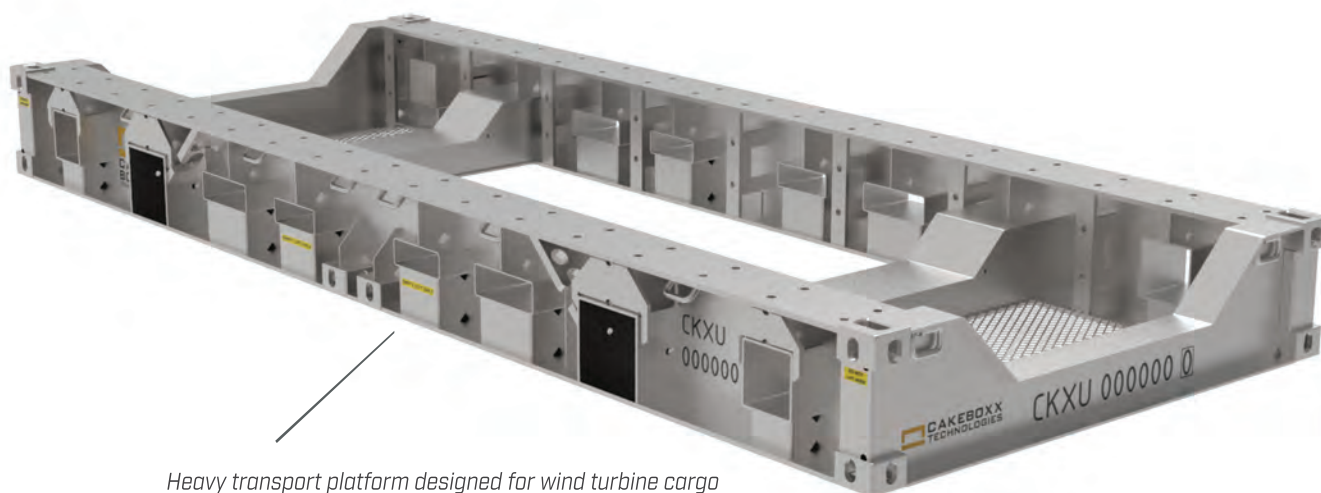


# Special Platforms

Think It - Build It



Our engineers work with your specific requirements to design and build complete custom engineered container solutions to meet specific requirements.

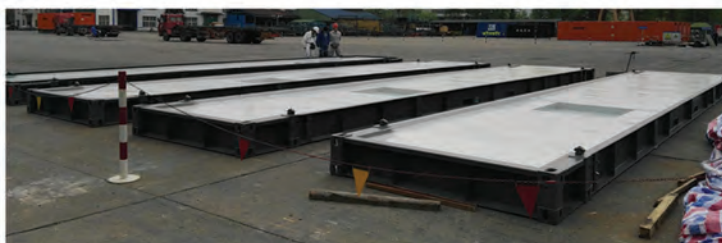


*Heavy transport platform designed for wind turbine cargo*

## **Custom Decks and Transport Platforms**

The CakeBoxx two-piece container deck can be used independently of the lid much in the same way as a flat rack where required and can be stacked in multiples for easy return transportation. Additionally, CakeBoxx Technologies designs complete custom transport platforms to suit any requirement. A product line of standard or custom engineered flat racks with folding posts is also available.

CakeBoxx platforms can be used for the transportation and storage for any number of different heavy, awkward-shaped, high-value, high-consequence cargos, and for other special applications.



*CakeBoxx sump tray decks*



*Wind industry transport platforms stacked for return transportation*



# CakeBoxx® Two-piece Shipping Containers

Put a Lid On It

**CakeBoxx Technologies LLC's inaugural innovation is the two-piece "deck and lid" shipping container; engineered for safety, security, and efficiency.**

The key feature of every CakeBoxx® two-piece container is the unique deck and lid construction. Cargo can be loaded and unloaded to and from the deck via the top and all sides, which is a much simpler, safer and quicker task than through the rear doors of standard containers.

The deck and lid design seals and secures the container contents entirely, making unauthorized access and theft virtually impossible.



**Deck**

## Vertical Locking System™

Simple, Quick and Efficient

The **Vertical Locking System™** is a feature built into every CakeBoxx two-piece product. This easy-to-use twist lock system appears above all four corner castings of every model. It secures and releases the lid to and from the deck by simply rotating 90-degrees.



*Open / Unlocked*



*Closed / Locked*

CakeBoxx models over 40ft in length also include an End Locking System. This comprises four sliding locking rods, two located on each end at the outboard corners, and heavy-duty capture lugs mounted to the deck in corresponding locations - these easily slide into position to lock and unlock.



*Open / Unlocked*



*Closed / Locked*





# The CakeBoxx Deck

## High Strength Base for Heavy Cargo

The deck portion of a CakeBoxx two-piece container is the flat platform the lid secures to. CakeBoxx decks offer the strength and loading ease of flat racks and open top design, combined with the security and protection of a completely enclosed container. The TrusDek® Series is the latest CakeBoxx deck technology and comes as standard on all CakeBoxx container types, sizes and configurations.

The deck design locks to the lid, keeping cargo safe and secure during transport and storage. It conveniently loads from 360-degrees and is handled by all standard container handling equipment and a wide variety of commercial lifting equipment.

The thickness also allows it to work as a movable pallet after removing the lid. It can be used as an equipment foundation or for other useful applications while still supporting the fully rated payload of the container.

### Flat, Open Deck

Allows for maximum usable footprint and is ideal for side loading with equipment such as forklifts.



### Recessed Deck

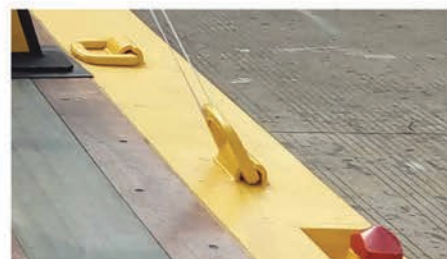
Allows more vertical space for cargo and provides a secure fit, which can benefit rolling stock or heavy equipment.



## Versatile Perimeter Tie Down System (PTS™)

Simple, Quick and Efficient

Customer-defined lashing points with up to 30 flush-mounted, heavy-duty D-Rings provide a wide array of cargo lashing options, including countersunk, threaded attachment points for a variety of anchor fittings or through-bolts, allowing opportunities to secure cargos in ways that ordinary, doored containers cannot.



# CakeBoxx Designs

## Applied Engineering

A wide range of options are available on all of our container and platform solutions, to suit your specific requirements.

### **Doors and Viewing Ports**

Containers are available with or without access and cargo doors or removable panels as required and can be designed to customer specifications where necessary.



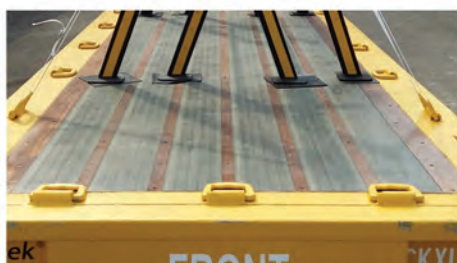
### **Lifting Tubes and Rings**

For special cargo handling requirements, lifting tubes or rings can be added.



### **Custom Flooring**

A variety of customer-specified flooring materials to precisely fit specific requirements for decks and platforms are available. These include steel, FSC certified bamboo or OSB plywood, hardwood, or fiber reinforced plastic (FRP).



### **Corner Guides**

Corner guides are available to aid the securing of the container and to prevent cargo damage during loading and unloading operations.

### **Insulation Packages**

A variety of high-performance insulation options are available.

### **LED Lighting**

Where light in the CakeBoxx lid is a concern, internal LED lighting can be fitted.

### **Environmentally Friendly Paint**

Paint options are available on request. This includes environmentally friendly water-based paints.







# Safety Act Designation

## Anti-Terrorism Technology



In 2018 the Office of SAFETY Act Implementation at the U.S. Department of Homeland Security congratulated CakeBoxx Technologies on receiving SAFETY Act liability and risk management protections for their innovative, high-security, 'deck and lid' design containers.

CakeBoxx doorless two-piece container models are a Qualified Anti-Terrorism Technology (QATT) and are listed on the SAFETY Act's Approved Equipment List. The SAFETY Act 'Designated' mark can be used by CakeBoxx products as a seal of confidence from U.S. Government security experts that they are effective against terrorism.



*We launched the CakeBoxx products to provide a secure option to confront the pervasive and growing container security threat. Our doorless design is an extremely effective deterrent to the most common risk scenarios. At the same time, we wanted to keep the design simple to facilitate ease of inspection and use. We made it strong to ensure longevity and reliability. This combination of attributes results in a very safe, highly secure, and money-saving product with a strong return on investment for a very broad spectrum of users. There are more versions of the CakeBoxx design coming to serve more products and requirements.*

**Daine Eisold**  
**Founder and CEO**  
**CakeBoxx Technologies**

# Solutions for **ENERGY**

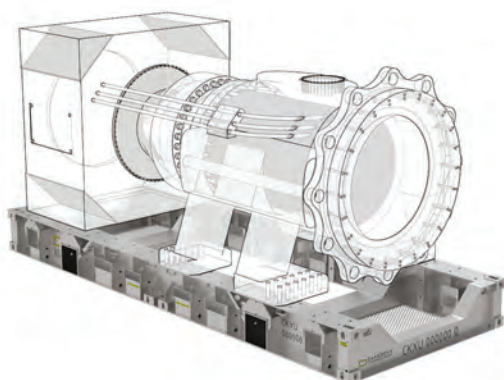
**CakeBoxx Technologies is committed to driving the development of advanced transportation systems across the wind, renewables, hydrogen power, and nuclear energy sectors.**

We design and build advanced transportation and storage systems for these critical infrastructure supply chains. Our custom-engineered transport platforms are the industry standard for moving onshore and offshore wind turbine components. In addition, custom two-piece CakeBoxx containers are highly effective in safely transporting nuclear materials for modern nuclear power plants.

CakeBoxx solutions allow the energy industries to move faster, safer, more sustainably, and with reduced risk of cargo damage.



*CakeBoxx 40ft special application Flat Rack for wind components, including custom fitments for different cargos*



*CakeBoxx 20ft heavy transport platform for wind turbine cargos, capable of carrying 100 tons*



*CakeBoxx two-piece 20ft Industrial Package (IP) Type 1 rated container for safe storage and transportation of nuclear waste*



# Solutions for STEEL

**CakeBoxx Technologies has confronted the problem of reimagining shipping containers for the global metal shipping industries.**

By simple adaptation, our CoilBoxx™ container transformed a handling-intensive coil shipping process by integrating the steel coils with the deck of the CakeBoxx two-piece container design, allowing simple containerization of steel coils.

CakeBoxx two-piece containers in their various configurations are highly effective for transporting all kinds of metal cargos due to the easy 360° access to the deck portion. This allows heavy or awkwardly shaped metals to be quickly loaded and unloaded while efficiently using the entire container volume. In addition, our BreakBulkBoxx™ product line of 45ft and 53ft containers is particularly suited to long metal cargos, and ShortBoxx™ half-height models to high-density, low-volume cargos.

CakeBoxx containers and platforms provide a time and cost-saving containerized shipping alternative to traditional break bulk vessel and flatbed transport for steel and other metal cargos.



*20ft CoilBoxx™ two-piece container*



*CakeBoxx two-piece 20ft CoilBoxx™ Platform 2 with tarp*



*CakeBoxx 40ft two-piece container loaded with pipe, secured with the Perimeter Tie Down System (PTS™)*



*ShortBoxx™ 20ft two-piece container loaded with ingots, secured with the Perimeter Tie Down System (PTS™)*

Solutions for

# AEROSPACE & DEFENSE

**Transport solutions for the mission-critical, high-value and high-consequence cargos of the aerospace, aviation and defense sectors.**

CakeBoxx Technologies works extensively with organizations across the aerospace and defense industries, providing transport solutions to best suit the sensitive, and often mission-critical cargos shipped in these sectors.

Aerospace engineering often requires heavy, complex-shaped, and high-cost parts which can be fragile or easily incur damage. CakeBoxx shipping containers for aviation and defense can be custom engineered in dimensions and form factor to provide maximum loading and unloading efficiency, both shipment and people safety, as well as the highest cargo security. Candidate defense and aerospace cargos shipped with CakeBoxx solutions include airplane parts, communications equipment, batteries, weapon systems, electronics, data centers, radar installations and munitions.



*Side-opening 20ft special application container concept designed for storage and transport of UAVs*



*CakeBoxx 20ft two-piece container with end and side access doors, designed for uncrewed vehicle cargos*



*CakeBoxx 40ft two-piece container concept with special application fitments for UAV cargo*



# Containerize

# BREAK BULK

**CakeBoxx two-piece containers allow containerized transport for many cargos that would only otherwise ship as costly break bulk or RORO.**

The high costs and risks involved with shipping break bulk cargo are driving manufacturers worldwide to increasingly redesign their products and packaging to take advantage of containerized intermodal transportation. Still, many products cannot be loaded into standard containers due to their size, shape, and weight. The CakeBoxx two-piece design allows shippers to take full advantage of the full container volume through simple top and side loading/unloading operations.

## Why swap break bulk for a CakeBoxx container?

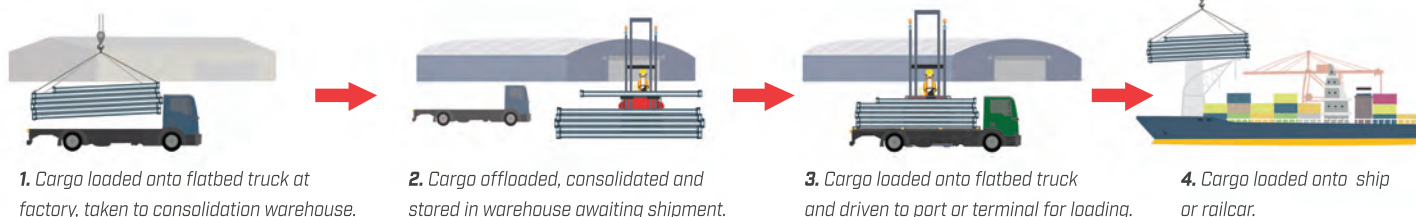
- ✓ **Reduced cost** - Container shipments cost less than break bulk per ton
- ✓ **Increased efficiency** - Top and side loading a container is faster than pierside stevedoring
- ✓ **More transport options, less waiting** - Container ships call more frequently than dry cargo ships
- ✓ **Fewer restrictions** - Eliminates the need to accumulate cargo and dry cargo ship minimums
- ✓ **Safer and more secure** - Containerized goods have fewer handling accidents, damage, and thefts
- ✓ **Range of sizes** - CakeBoxx two-piece containers are available up to 53ft in-gauge as well as custom options for OOG loads

## Candidate cargos

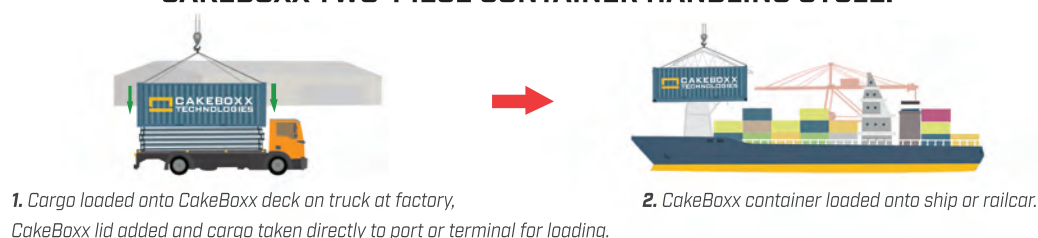
- ✓ Structural steel, pipe, re-bar
- ✓ Baled scrap
- ✓ Wheeled and tracked vehicles
- ✓ Coil, plate, sheet, ingots



## CURRENT HANDLING CYCLE:



## CAKEBOXX TWO-PIECE CONTAINER HANDLING CYCLE:



# CakeBoxx® 20ft / 40ft

## Integrating Seamlessly

**Dimensionally identical to standard ISO containers, the CakeBoxx 20ft and 40ft containers also have the same load capacities.**

The CakeBoxx 20ft and 40ft containers are the perfect choice for optimizing regular supply chain operations safely and efficiently.

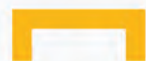
The unique CakeBoxx deck and lid design seals and secures the container contents entirely, making unauthorized access and theft virtually impossible.

These containers integrate seamlessly into all intermodal processes, including stacking, storage, terminal transfers, and ship, rail, and truck haulage.

CakeBoxx two-piece containers are also available as standard in 10ft length.







## ShortBoxx®

### Two-piece in half-height



**At half the height of a standard high cube container, ShortBoxx containers at 4'9" are ideal for high gross weight, low volume cargos such as steel, copper, or aluminum ingots.**

ShortBoxx is also the perfect choice for liquid or granular cargos and chemicals shipped in tanks, drums, barrels or Intermediate Bulk Containers (IBCs) that need to be carefully secured and cannot be stacked two-high. Two ShortBoxx containers can also be safely and efficiently stacked; maximizing product haulage potential but with the same footprint as a standard container. ShortBoxx comes in all standard container lengths and more.



## BreakBulkBoxx™

Maximize Capacity

**The BreakBulkBoxx 45ft and 53ft two-piece containers maximize load potential for standard container operations and are perfect for transporting goods only otherwise movable as break bulk or RORO.**

The 53ft WTP configuration is tailored to US intermodal transport handling equipment; making it perfect for moving cargos across road and rail, while the 45ft model fills the long-awaited gap between 40ft and 53ft containers.





# CoilBoxx™

## CakeBoxx for Coils

With a specially modified deck and a various lid configuration options, CoilBoxx™ 20ft containers are the perfect option for safe, secure and cost-effective containerized coil transport.

CakeBoxx CoilBoxx containers encompass the same 'deck and lid' design, locking system, and CSC certification to ISO standard as other 20' CakeBoxx variations.

The cradles slot into grooves in the CoilBoxx deck and are easily adjusted to accommodate coil cargos of different sizes. Coils can be quickly, easily loaded/unloaded, and effectively lashed with 360° access to the cradles and CakeBoxx Perimeter Tie Down System (PTS).



### Why move coils in a CakeBoxx container?

- ✓ **Improved handling** - Simple, quick loading and securement of coils using existing lashing materials and no need for blocking or bracing
- ✓ **Increased efficiency** - Reduced handling time and increased terminal velocity with seamless integration into the logistics chain
- ✓ **Safe & Secure** - Safe to operate, total protection from the weather with closed lid, and reduced or eliminated chance of impact damage
- ✓ **Containerized** - Containerizing coils allow for lower cost, more frequent shipping options than break bulk
- ✓ **Versatile** - Can be shipped without the lid like a flat rack for domestic movements, saving time and cost
- ✓ **Backhaul** - Cradles can be bundled at one end of the container, allowing for flat deck back haul cargos



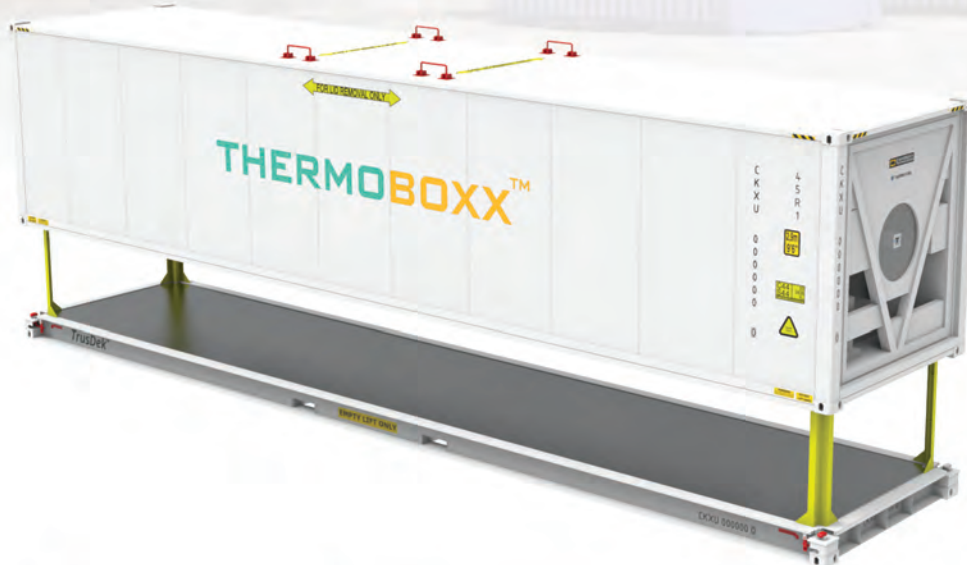
# ThermoBoxx™

## Two-piece reefer



Available as standard in 20ft and 40ft lengths or built-to-spec, the ThermoBoxx™ line of two-piece reefer containers provides temperature control with all the benefits of the CakeBoxx two-piece form factor.

ThermoBoxx™ reefer containers are perfect for containerizing difficult-to-load specialized goods or cargos that need a high level of security, with a requirement for refrigeration or temperature control. The CakeBoxx two-piece design, with its easy top and side loading factor, allows shippers to use the container volume fully and not waste space. This product line makes containerization possible for many industries where shipment of temperature-sensitive products or parts on container vessels was not previously viable with standard containers due to loading or security issues.



### Why use a two-piece Reefer?

- ✓ **Improved handling** - Easy, quick loading and securing of goods using existing lashing materials  
Increased efficiency - Reduced handling time and increased terminal velocity with seamless integration into the logistics chain
- ✓ **Safe & secure** - Safe to operate, total protection from the weather with closed lid, and reduced or eliminated chance of impact damage
- ✓ **Versatile** - Perfect for many industries requiring temperature control, including high tech, electronics, defense, composites, space and aeronautics, pharmaceuticals, and for the shipment of chilled and frozen food and drink. Available with or without industry-standard cargo loading doors

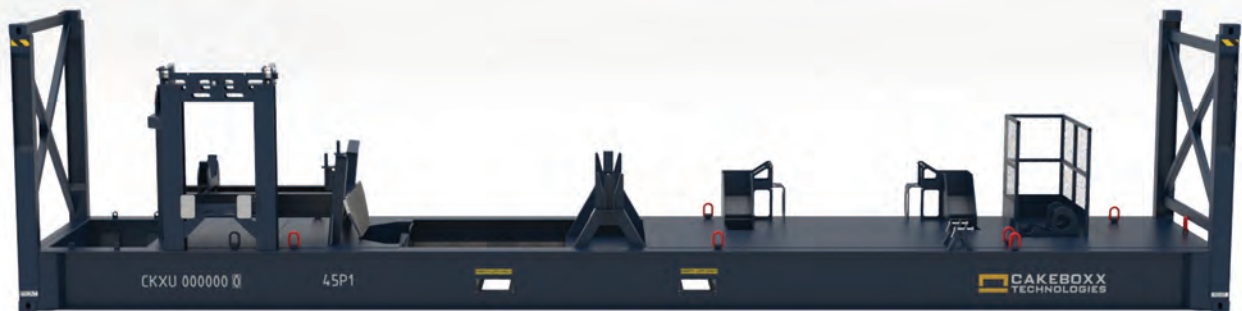


# CakeBoxx Flat Rack

## Flexible Freight Transportation

Available in all standard lengths up to 53ft and to-spec with any custom fitments, CakeBoxx Flat Racks are a flat-deck solution offering a great deal of flexibility for intermodal transportation and the ability to carry extremely heavy payloads.

Collapsible CakeBoxx flat racks can be stacked to accommodate a smaller footprint when repositioning. In addition, the CakeBoxx Flat Rack 53ft is tailored to US intermodal transport handling equipment, making it perfect for moving cargo across road and rail.



### CAKEBOXX FLAT RACK HANDLING CYCLE:



**1.** CakeBoxx Flat Rack secured onto chassis and taken to shipper's yard. Cargo loaded onto the Flat Rack.



**2.** After road transportation to rail terminal, the loaded Flat Rack transferred onto railcar.



**3.** The CakeBoxx Flat Rack is transported via rail, where it can be double stacked for cost efficiency.



**4.** Cargo is transferred from rail to chassis for delivery to customer.







# ChassisBoxx

## The Flatbed CakeBoxx



**The CakeBoxx ChassisBoxx transforms a container chassis to a fully enclosed flatbed trailer for over the road use.**

The deck is installed simply by fitting it to the existing twistlocks on any standard container chassis. Cargo is top or side loaded and secured before installing the ChassisBoxx lid. Cargo is protected from the elements, theft, vandalism, and general damage caused by uncovered transport – precisely in the same way a fully enclosed shipping container or truck trailer would.

ChassisBoxx adds value and productivity to existing and under-utilized container chassis and add flexibility to your ground transport needs.



# Standard Containers

## Maximize Capacity



**In addition to the specialized, systems-engineered solutions CakeBoxx Technologies provides to our customers, we also offer competitive rates on standard ISO containers of all sizes, in addition to other out-of-gauge and customized container options.**

This includes side-opening containers, open-top containers, flat racks, and many more. Contact CakeBoxx Technologies directly with your requirements for a quotation.



# Contact CakeBoxx

---



## **USA/Global**

CakeBoxx Technologies, LLC  
1499 Chain Bridge Road, Suite 104  
McLean, VA  
22101  
USA



+1 (571) 830-6559



[info@cakeboxx.com](mailto:info@cakeboxx.com)  
[www.cakeboxx.com](http://www.cakeboxx.com)

## **UK/Europe**

CakeBoxx Technologies UK LTD  
The Ark, Short Street  
Canterbury, Kent  
CT3 1PR  
UK

+44 (0) 1304 841026

## **Denmark**

CakeBoxx Technologies, ApS  
Inge Lehmanns gade 10, 6 sal.  
8000 Aarhus C.  
Denmark

+45 5221 1288

